



10th

World Kungfu Championships

REGULATIONS

🕒 October 14-20, 2025

📍 Emeishan, China

International Federation
recognised by the



International
Olympic
Committee

Version 2, issued on May 10, 2025 by IWUF

© International Wushu Federation

Lausanne Office: Avenue de Rhodanie 58, 1007 Lausanne, Switzerland

Beijing Office: 9 Huaweili, Chaoyang District, 100021 Beijing, China

www.iwuf.org



CONTENTS

I. GENERAL INFORMATION

1. INTRODUCTION	1
1.1. China Overview	1
1.1.1. Geography	1
1.1.2. Climate	1
1.1.3. Population, Ethnicity & Language	1
1.1.4. Religion	2
1.1.5. Others	2
1.2. Chengdu Overview	2
1.3. Emeishan Overview	2
1.4. International Airport	3
1.4.1. Chengdu Tianfu International Airport.....	3
1.4.2. Chengdu Shuangliu International Airport.....	3
1.5. Weather	4
1.6. Electricity.....	4
1.7. Telephone.....	4
2. INTRODUCTION TO WORLD KUNGFU CHAMPIONSHIPS.....	4
3. DATES & PLACE	5
3.1. Competition Date.....	5
3.2. Important Dates.....	5
3.2.1. Final Entry.....	5
3.2.2. Late Entry & Changes (Upon Approval by IWUF)	5
3.3. Competition Place	5
4. VENUES	5
4.1. Competition Venue	6
4.2. Training Venue.....	6
5. GENERAL PROGRAM	6
6. KEY CONTACTS	7

II. TECHNICAL INFORMATION

7. COMPETITION EVENTS.....	8
7.1. Individual Events.....	8



7.1.1.	Individual Bare-hand Routines.....	8
7.1.2.	Individual Weapon Routines.....	9
7.2.	Duilian (Choreographed Sparring) Events.....	9
7.3.	Jiti (Group) Events.....	9
8.	AGE CATEGORIES.....	10
9.	QUALIFICATIONS.....	10
1.1.	Membership.....	10
1.2.	Athlete Eligibility.....	10
10.	PARTICIPATION METHODS.....	10
10.1.	Quota.....	10
10.1.1.	Athlete.....	10
10.1.2.	Team Official.....	10
10.1.3.	Team Judge.....	11
10.1.4.	Observer.....	11
10.2.	Participation Events.....	11
10.2.1.	Events for Athletes.....	11
10.2.2.	Duilian Routines for Teams.....	11
10.2.3.	Jiti Routines for Teams.....	11
10.3.	Relevant Documents.....	11
11.	COMPETITION RULES.....	12
12.	COMPETITION METHODES.....	12
12.1.	Group Competition.....	12
12.2.	Routines Time Limits.....	12
12.3.	Accompanying Music.....	12
12.4.	Roll Call.....	13
13.	COSTUMES & EQUIPMENT.....	13
13.1.	Compliance Requirement of Marketing & Advertising.....	13
13.2.	Uniforms & Weaponry Requirements for Competition.....	13
13.2.1.	Uniforms & Weaponry.....	13
13.2.2.	Competition Bib.....	13
13.3.	Clothing Requirements for Opening & Closing Ceremonies.....	13
13.4.	Clothing Requirements for Awards Ceremony.....	13
13.5.	Compliance Check at Roll-call Area.....	14
14.	PLACING & AWARDS.....	14
14.1.	Placing.....	14
14.1.1.	Individual Events & Duilian Events.....	14



14.1.2. Jiti Routines	14
14.1.3. Other Placing Methods	14
14.2. Awards	14
14.3. Participation Certificates	15
15. AWARDS CEREMONY	15
15.1. Medalists.....	15
15.2. Athletes & Team Officials	15
15.3. Others	15
16. ENTRIES.....	16
16.1. Final Entry.....	16
16.2. Late Entry & Changes Policy	16
17. ARRIVALS & ACCREDITATION	17
17.1. Arrivals.....	17
17.2. Accreditation.....	17
18. TECHNICAL MEETING	18
19. DRAWING OF LOTS.....	18
20. TECHNICAL OFFICIALS.....	18
20.1. International Technical Officials (ITOs).....	18
20.1.1. Registration	19
20.1.2. Uniform	19
20.1.3. Judges' Refresher Course	19
20.2. National Technical Officials (NTOs)	19
21. IWUF SEMINAR PROGRAM	19

III. TEAM INFORMATION

22. ACCOMMODATION.....	20
23.1. Accommodation Reservation.....	20
23.2. Room Reservation Policy.....	20
23.3. Hotel Information	20
23.3.1. VIP & Judge Hotel.....	20
23.3.2. Team Hotels.....	22
23. TRANSPORTATION.....	25
23.1. Transport Services for Arrivals & Departures	25
23.1.1. Designated Railway Stations.....	25
23.1.2. Airports & Chengdu major Railway Stations	26



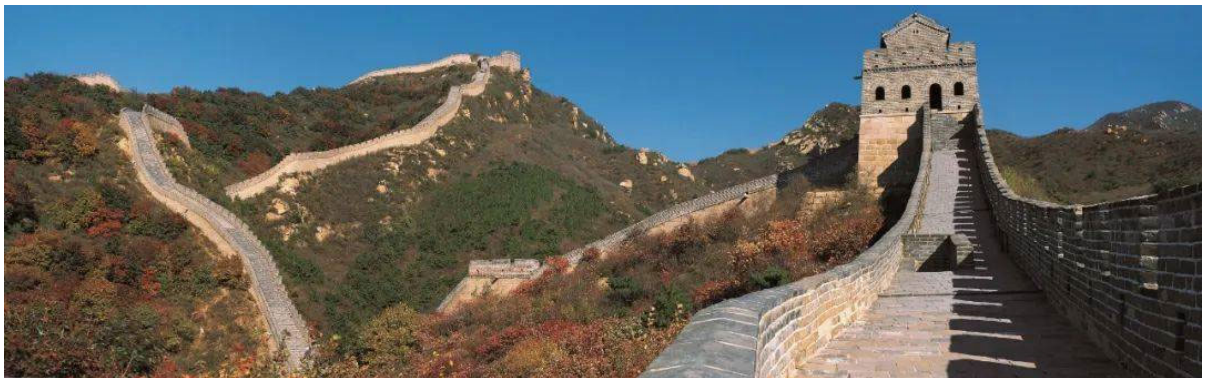
23.2. Local Transport Services	27
24. FINANCIAL CONDITIONS	27
24.1. Teams	27
24.2. Technical Officials.....	27
24.3. Additional Costs	27
24.4. Payment Methods.....	27
25. RESPONSIBILITY OF MEMBER FEDERATIONS.....	28
25.1. Fundamental Principles	28
25.2. Attitude of Athletes & Coaches	28
25.3. Image of Athletes.....	28
25.4. Insurance	28
26. PASSPORT & VISA REQUIREMENTS	29
27. ANNEX.....	29
Annex 1. Wavier of Liabilities	30
Annex 2. Medical Certificate (Sample).....	32
Annex 3. IWUF Brand Control Guidelines for Wushu Competition Uniforms (excerpt)	34

I. GENERAL INFORMATION

1. INTRODUCTION

1.1. China Overview

China, one of world' s most ancient civilizations, has a history dating back over 5,000 years. This has led to the country having an extraordinarily rich cultural heritage. As the world's largest developing country, China has seen remarkable progress in its economic and social development. Today's China is politically and socially stable, and economically prosperous, with its people's lives getting better each day.



1.1.1. Geography

China is located on the east side of Asia and the west edge of the Pacific Ocean. Covering a land area of about 9.6 million square kilometers, it features over 18,000 kilometers of continental coastline along its eastern and southern edges, and approximately 4.7 million square kilometers of inland and border seas. There are more than 7,600 islands of varying sizes in the sea area, among which the island of Taiwan, with an area of 35,798 square kilometers, is the largest.

1.1.2. Climate

Given its sheer size, it is perhaps not surprising that China has a range of climates. Most of the country lies in northern temperate zone that features a mild, continental monsoon climate and four distinct seasons.

1.1.3. Population, Ethnicity & Language

Population: 1,411.78 million.

Ethnicity: China is a multi-ethnic country with 56 ethnic groups in total.

Language: There are more than 80 local languages and about 30 Chinese writing systems. Mandarin

(also known as Putonghua) is the country's national language.

1.1.4. Religion

Religion: China is a multi-religious country. The main religions are Buddhism, Taoism, Islam, Catholicism and Christianity. Chinese citizens enjoy freedom of religious belief.

1.1.5. Others

China shares borders with 14 countries and is adjacent to eight countries by sea. The capital city is Beijing. China is comprised of provincial-level administrative divisions that can be further classified into: 4 municipalities directly under the central government, 23 provinces, 5 autonomous regions and 2 Special Administrative Regions.

Currency: The legal currency is renminbi (RMB), with yuan as the basic unit, and jiao and fen as fractions of this basic unit. One yuan is equal to 10 jiao and one jiao equal to 10 fen. Foreign currency can be freely exchanged in most hotels and banks on the Chinese mainland.

1.2. Chengdu Overview

Chengdu, known as Rong (Hibiscus) for short, the capital of Sichuan Province, enjoys the reputation of the "Land of Abundance" since ancient times. It is a renowned historical and cultural city with its name and site unchanged over the past 2,000 years.



Chengdu is an important center of economy, science and technology, finance, culture and creativity, international exchanges, as well as an international comprehensive transportation and telecommunication hub in China.

1.3. Emeishan Overview

Fringes of the Sichuan Basin, it boasts a history spanning over 2,600 years. Covering an area of 1,183 square kilometers, it has a permanent population of 429,000 individuals. Within its bounds, a subtropical humid monsoon climate prevails. The annual mean temperature stands at 17.6°C, while the average yearly rainfall measures 1,390.3 millimeters. Forest coverage



blankets 63.68% of the terrain, and the mean concentration of negative oxygen ions reaches 4,338 ions/cm³.

Mount Emei, renowned for its landscape that can be described as "exquisitely crowned among the heavens", holds a venerable Buddhist heritage and distinctive cultural landscapes that are both enduring and unique. This acclaim is shared both domestically and internationally, solidifying its status as one of the China's four distinguished locales and the sole province-level seat to bear the dual mantle of "World Heritage" for both culture and nature. The city currently boasts one 5A-level scenic area of China: the Mount Emei Scenic Area and three 4A-level scenic areas of China: the Giant Buddhist Temple, the Sichuang Lvbotiandi and the Nongfu Spring. It has garnered recognition as an exceptional Chinese tourism city, a national comprehensive tourism demonstration zone, one of the top 100 counties and cities in China for overall tourism competitiveness, and a premier Tianfu tourism county in the province.

1.4. International Airport

1.4.1. Chengdu Tianfu International Airport

Chengdu Tianfu International Airport (IATA: TFU, ICAO: ZUTF), the largest civil airport that is put into operation in the opening year for the "14th Five-Year Plan", is positioned as the main hub of Chengdu's international aviation hubs. In phase I, it has three runways (two lengthways routes and one horizontal route) as well as terminals that cover 710,000 m², with supporting facilities, and it can address an annual passenger throughput of 60 million and cargo throughput of 1.3 million tons. For the long term, the Airport plans to build six runways (four lengthways routes and two horizontal routes) and a terminal building of 1.4 million m², which can address an annual passenger throughput of 120 million and cargo throughput of 2.8 million tons.



1.4.2. Chengdu Shuangliu International Airport

Chengdu Shuangliu International Airport (IATA: CTU, ICAO: ZUUU) is located in the southwest of Chengdu City, Sichuan Province, about 16 kilometers away from the city center. The predecessor was Chengdu Shuanggui Temple Airport, which was built in 1938. It was put under civil aviation use in 1956 and was renamed "Chengdu Shuangliu Airport". After 39-years continuous development, it was



approved by the state as an international port airport in 1993 and was renamed "Chengdu Shuangliu International Airport" on November 30, 1995. The Terminal 1 (T1) was put into use on October 26, 2001. The second runway was transferred to normal operation on May 5, 2011, and the Terminal 2 (T2) was officially opened on August 9, 2012, marking the entry into a dual-terminal-operation era.



Chengdu Shuangliu International Airport has 2 terminals with a total area of 500,000 square meters; 2 parallel runways which are suitable for A380 to take off and land; 3 air cargo stations; 7 aircraft parking areas with a total number of 228 parking stands, 85 boarding bridges. Chengdu Shuangliu International Airport is a 4F-class international aviation hub, one of China's eight regional hub airports, and an aviation hub for passenger and cargo distribution in inland areas of China.

1.5. Weather

Historical average temperatures for Emeishan in October range from 17°C-27°C.

1.6. Electricity

The electricity standard in China is 220V (50Hz).

1.7. Telephone

To call China from abroad, dial +86 (country code) followed by the city code, followed by the local number.

2. INTRODUCTION TO WORLD KUNGFU CHAMPIONSHIPS

The World Kungfu Championships (WKFC), hosted by the IWUF, is an international level sporting event established in 2004 to propagate the development of wushu around the world. As there are dozens of kungfu (traditional wushu) styles represented in the WKFC, these championships offer a unique platform for thousands of practitioners of all ages and varying skill levels to come together every two years. At the WKFC, mutual understanding is fostered through skill and cultural exchanges. In the spirit of sport, growth, development, and health are the core values of the event. The WKFC provides a festive foundation for building connections and nurturing passion for the practice of wushu.



With the first edition taking place in 2004, the WKFC has been held nine editions so far. The 10th WKFC will be held from October 14 to 20, 2025 in Emeishan city, Sichuan province, China, and will feature hundreds of events for the 6000+ participants to take part in. The 10th WKFC will also host the fourth edition of the IWUF Seminar Program, providing exclusive opportunities to listen to and learn from kungfu masters and experts. The City of Emeishan, with the support of the Chinese Wushu Association, is responsible for organizing the 10th WKFC under the auspices of the IWUF.

For more information on the 10th WKFC, please visit the IWUF official website <http://www.iwuf.org>, also visit the official social media, Facebook, Instagram (IG), YouTube.

3. DATES & PLACE

3.1. Competition Date (Hereinafter, the dates and times are all in Beijing Standard Time)

October 17-19, 2025.

3.2. Important Dates

3.2.1. Final Entry

May 10, 2025-September 13, 2025.

3.2.2. Late Entry & Changes (Upon Approval by IWUF)

September 14, 2025-September 29, 2025.

3.3. Competition Place

Emeishan City, Sichuan Province, China.

4. VENUES

As the permanent venue of the Sichuan International Tourism Expo - one of Sichuan's three major expos, the center is the first large-scale international convention and exhibition complex in Leshan City. It integrates multiple functions, including exhibitions, conferences, business services, cultural performances, and sporting events, serving as a world-class, intelligent expo hub.

With a floor area of 50,000 square meters, the main





structure adopts a traditional Han-Tang architectural style. The vibrant Chinese-red gate tower contrasts elegantly with the rustic brown exterior walls, creating a grand, majestic façade that embodies a festive, joyful, and auspicious ambiance.

Venue address: No. 59, BMW North Street, Shengli Town, Emeishan City, Sichuan Province.

4.1. Competition Venue

3rd Floor, Sichuan International Tourism Expo Center.

4.2. Training Venue

TBD.

5. GENERAL PROGRAM

Date	Time	Activity	Location
Oct. 14 (Tue)	Whole Day	Team & Judges Arrivals & Registration	Hotels
Oct. 15 (Wed)	Whole Day	Team Arrivals & Registration	Team Hotels
	09:00-12:00	Judges' Refresher Course	Judge Hotel
	14:30-17:30	Judges' Refresher Course	Judge Hotel
Oct. 16 (Thur)	Whole Day	Team Training	TBD
	09:00-12:00	Judges' Refresher Course	Judge Hotel
	10:00-12:00	Technical Meeting	TBD
	14:30-17:30	Judges' Rehearsal	3 rd Floor, SITEC
Oct. 17 (Fri)	Whole Day	Competition & Awards Ceremony	3 rd Floor, SITEC
	19:30-20:30	IWUF Wushu Seminar	TBD
Oct. 18 (Sat)	Whole Day	Competition & Awards Ceremony	3 rd Floor, SITEC
	19:30-20:30	IWUF Wushu Seminar	TBD
Oct. 19 (Sun)	Whole Day	Competition & Awards Ceremony	3 rd Floor, SITEC
	19:30-20:30	IWUF Wushu Seminar	TBD
Oct. 20 (Mon)	Before 14:00	Departures	

★Note: 1. This program is subject to change depending on the number of the registered athletes.

2. SITEC = Sichuan International Tourism Expo Center.



6. KEY CONTACTS

- **IWUF Secretariat**

Tel: +86-10-87774492

Email: events@iwuf.org

- **Chinese Wushu Association (CWA)**

Contact person: TIAN Ye/WANG Jiaqi

Tel: +86-10-64912153

Email: wushu@wushu.com.cn

- **Local Organizing Committee of 10th WKFC (LOC)**

Local organizer: Sichuan Major International Travel Agency Co., Ltd

Contact person: YONG Haigang/FENG Yu

Tel: +86-19980595729/+86-19980596715

Email: wushu_service@sina.com



II. TECHNICAL INFORMATION

7. COMPETITION EVENTS

7.1. Individual Events

7.1.1. Individual Bare-hand Routines

Routine Type	Individual Bare-hand Routine
Taijiquan-type routines	Chen Style, Yang Style, 42-movements Taijiquan Other Taijiquan-type Routines: Wu Style, Wu Style, Sun Style, Zhaobao Style and others
Nanquan-type routines	Yongchunquan (Wing-chun), Cailifoquan (Choy-lay-fut), Hongjiaquan (Hung-gar). Other Nanquan-type Routines: Wuzuquan (Ngo-cho), Liujiacqu (Lau-gar), Caijiacqu (Choi-gar), Lijiacqu (Li-gar), Mojiacqu (Mok-gar), Baimeiquan and others
First-type bare-hand routines	Xingyiquan, Baguazhang, Bajiquan
Second-type bare-hand routines	Tongbiquan, Piguaquan, Fanziquan
Third-type bare-hand routines	Yingzhaoquan (Eagle style), Tanglangquan (Mantis style)
Fourth-type bare-hand routines	Chaquan, Huaquan, Paoquan, Hongquan
Fifth-type bare-hand routines	Shaolinquan, Wudangquan, Emeiquan and others

Note:

- All events are for men and women unless otherwise stated.
- If the registered athletes of the above single events in the individual bare-hand routine are **6 or more than 6 persons**, then it will be considered as a medal event.
- If the registered athletes of each age group in a single event are **5 persons or fewer**, these events will be combined in accordance with the above each type event.



7.1.2. Individual Weapon Routines

Routine Type	Individual Weapon Routine
Single-weapon routines	<p>Dao (Broadsword), Jian (Straight Sword), Gun (Cudgel/Staff), Qiang (Spear), Pudaο, Guandao (Kwan-dao), Shanzi (Fan), Nandao (Southern Broadsword), Nangun (Southern Staff/Cudgel), Taijidaο, Taijiqiang, Taijijian, 42-movements Taijijian, Taijishan</p> <p>Other Single-weapon Routines: Zuijian (Drunken Sword), Bishou (Dagger), Changsuijian (Long Tassel Straight Sword) and others</p>
Double-weapon routines	<p>Shuangdao (Double Broadsword), Shuangbishou (Double Daggers), Shuangjian (Double Straight Sword/Double Long Tassel Straight Sword)</p>
Flexible/Soft-weapon routines	<p>Jiujiebian (Nine Section Whip Chain)</p> <p>Other Flexible/Soft-weapon Routines: Shuangjiegun (Nunchucks), Liuxingchui (Meteor Hammer), Shengbiaο (Rope Dart), Sanjiegun (Three Section Staff) and others</p>

Note:

- All events are for men and women unless otherwise stated.
- If the registered athletes of the above single events in the individual bare-hand routine are **6 or more than 6 persons**, then it will be considered as a medal event.
- If the registered athletes of each age group in a single event are **5 persons or fewer**, these events will be combined in accordance with the above each type event.

7.2. Duilian (Choreographed Sparring) Events

Routine Type	2 Persons Duilian	3 Persons Duilian	Note
Duilian routines	Bare-hand duilian	Bare-hand duilian	The genders and ages may be mixed
	Weapon duilian	Weapon duilian	
	Bare-hand vs. weapon duilian	Bare-hand vs. weapon duilian	

7.3. Jiti (Group) Events

Routine Type	At Least Six (6) Athletes in Jiti Events		Note
Jiti routines	Jiti bare-hand routines	Jiti weapon routines	The genders and ages of the athletes within this group are not limited



8. AGE CATEGORIES

- Group A: **11** years of age and below (born in and after 2014).
- Group B: **12-14** years of age (the year of birth: 2011 - 2013).
- Group C: **15-17** years of age (the year of birth: 2008 - 2010).
- Group D: **18-39** years of age (the year of birth: 1986 - 2007).
- Group E: **40-59** years of age (the year of birth: 1966 - 1985).
- Group F: **60** years of age and above (born in and before 1965).

9. QUALIFICATIONS

1.1. Membership

Only those federations/associations which have paid their IWUF annual membership fees for 2024 and 2025 will be permitted to participate in the 10th WKFC.

New IWUF member federations may be invited to take part in the 10th WKFC after their membership applications have been accepted by the IWUF. Hereinafter the IWUF member federation is referred to as "NF".

1.2. Athlete Eligibility

Athletes must be citizens or permanent residents of the country/territory that they are representing.

Athletes who have dual citizenship can only represent one country/territory in the championships.

10. PARTICIPATION METHODS

10.1. Quota

Each NF can enter at most 1 team.

10.1.1. Athlete

The number of athletes for each team is not limited.

10.1.2. Team Official

Each team may, at most, enter 4 team officials:

- 1 team leader
- 2 coaches
- 1 doctor



10.1.3. Team Judge

Each team may, at most, enter 1 taolu team judge.

10.1.4. Observer

Extra team delegate(s) exceeding the quota shall be registered as observer(s).

10.2. Participation Events

10.2.1. Events for Athletes

Each athlete may, at most, register to participate in 4 events:

- 1 individual bare-hand routine
- 1 individual weapon routine
- 1 duilian routine
- 1 jiti routine

10.2.2. DUILIAN Routines for Teams

Each team may at most register 1 duilian routine composed of **2 or 3 athletes**. The genders and ages may be mixed.

10.2.3. Jiti Routines for Teams

Each team may at most register 1 jiti event. The genders and ages of the athletes within this group are not limited. Each group must be composed of **at least 6 athletes**.

Jiti routines will be separated into jiti bare-hand routines and jiti weapon routines. Jiti routines mixing bare-hand and weapons will be categorized as weapon routines.

10.3. Relevant Documents

Upon arrival at the Accreditation Center, team leaders must submit the following documents to the LOC:

- Completed and signed Waiver of Liabilities of all participants (Annex 1), which must be signed by his/her parent or legal guardian for the participant who is under 18 years of age.
- Medical Certificates of all athletes issued by a qualified medical doctor from a check-up performed within a period of **15 days** prior to the date of registration at the competition (Annex 2).
- Life Accidental Injury Insurance Certificates of all athletes.



11. COMPETITION RULES

Unless otherwise stated within these regulations, the competition will be conducted in accordance with the IWUF Traditional Wushu Competition Rules and Judging Methods 2019 (Trial) (hereinafter referred to as "rules").

The rules may be interpreted solely at the discretion of the IWUF. In the event of language discrepancies in the rules, the English version shall prevail.

12. COMPETITION METHODES

12.1. Group Competition

If the number of registered athletes for a particular routine exceeds **50**, athletes of that event will be randomly and evenly divided into **2 or more groups** by the computer for the competition.

No preliminaries and finals will be held for those events.

12.2. Routines Time Limits

12.2.1. Individual Routines

From 40 seconds to 2 minutes in total duration (excluding taijiquan and taiji-weapon routines). The Head Judge will blow a whistle should 1 minute 30 seconds elapsed.

Taijiquan and taiji-weapon routines: From 3 to 4 minutes in total duration. The Head Judge will blow a whistle when 3 minutes have elapsed.

For competition/compulsory routines of taijiquan and taiji-weapon, there will be no point deductions for the omission of set techniques.

12.2.2. Duilian Routines

From 40 seconds to 2 minutes in total duration. The Head Judge will blow a whistle should 1 minute 30 seconds elapsed.

12.2.3. Jiti Routines

From 3 to 4 minutes in total duration.

12.3. Accompanying Music

Accompanying music is required for jiti routines, and should not include vocals of any form.

Each NF must upload the accompanying music through the IWUF Online Registration System with their



final entry submission. NFs shall be responsible for the music used.

Should accompanying music include vocals, or should no accompanying music be provided, the Head Judge will deduct 0.1 points.

12.4. Roll Call

Athletes shall arrive at the designated area for the first roll-call, which will occur 30 minutes prior to the start of the event. The second roll-call will occur 20 minutes prior to the start of the event, and the third roll-call will occur 10 minutes prior to the start of the event. Failure to be present for roll-call will result in forfeit.

13. COSTUMES & EQUIPMENT

13.1. Compliance Requirement of Marketing & Advertising

All teams must follow the IWUF Brand Control Guidelines for Wushu Competition Uniforms (excerpt) (Annex 3).

13.2. Uniforms & Weaponry Requirements for Competition

13.2.1. Uniforms & Weaponry

All athletes shall wear wushu competition uniforms in compliance with the rules during all events.
All athletes must provide their own uniform(s).

All weaponry must conform to the requirements as stipulated in the rules. All athletes must provide their own weaponry.

13.2.2. Competition Bib

2 competition bibs (20cm*15cm) for each athlete's use will be provided by the LOC to the teams upon accreditation.

The athlete should show his/her competition bib to the Head Judge before he/she enters the competition mat.

13.3. Clothing Requirements for Opening & Closing Ceremonies

All teams must wear their official national/territorial team uniforms at the Opening and Closing Ceremonies.

13.4. Clothing Requirements for Awards Ceremony



Medalists are expected to attend the Awards Ceremony in their national/territorial team uniforms.

13.5. Compliance Check at Roll-call Area

Uniforms and weapons checks will be conducted at the Roll-call Area in accordance with stated regulations and requirements. Uniforms and weapons checks are conducted by the Chief Registrar and the Roll-call Officials as stipulated in the rules. Non-compliance may be subject to disqualification from the competition.

14. PLACING & AWARDS

14.1. Placing

14.1.1. Individual Events & Duilian Events

In general, individual events and duilian events will be awarded as follows:

- 1st Category Prize = Awarded to 10% of the athletes (Top 20% will be awarded for age group A & F).
- 2nd Category Prize = Awarded to 20% of the athletes.
- 3rd Category Prize = Awarded to 30% of the athletes.

The awarding ratios will be based on **the actual number of participants** in an event and the 0.1 binary method will be implemented.

14.1.2. Jiti Routines

In general, jiti routines will be awarded as follows:

- 1st Category Prize = Awarded to 20% of the Groups.
- 2nd Category Prize = Awarded to 30% of the Groups.
- 3rd Category Prize = Awarded to 30% of the Groups.

The awarding ratios will be based on **the actual number of participating groups** in each event and the 0.1 binary method will be implemented.

14.1.3. Other Placing Methods

If the number of registered athletes for a particular routine exceeds **50**, athletes of that event will be randomly and evenly divided into **2 or more groups**, the above awarding method will be conducted in each group.

14.2. Awards



- 1st, 2nd and 3rd Category Prize recipients will receive medals and achievement certificates.
- If **the actual number of participants is 12 or more persons** in an individual event, the awarding methods are as follows:

Gold, silver and bronze medals and certificates will be awarded to the athletes ranked top 3 of the individual events respectively.

2nd Category Prize (Awarded to 20% of **the actual number of participants**) recipients will receive medals and achievement certificates.

3rd Category Prize (Awarded to 30% of **the actual number of participants**) recipients will receive medals and achievement certificates.

- Other athletes will receive participation certificates only.

14.3. Participation Certificates

All accredited people, including team officials, observers and athletes will receive a 10th WKFC participation certificate.

Team leaders are required to collect the participation certificates for their team from the LOC at the Results & Certificates Office.

15. AWARDS CEREMONY

15.1. Medalists

10 minutes before the Awards Ceremony starts, the medalists will be escorted by staff to the Waiting Area to get ready for the ceremony.

Medalists are required to attend the Awards Ceremony to receive their medals in person.

Medalists are expected to take off caps/hats/sunglasses during the Awards Ceremony.

15.2. Athletes & Team Officials

Athletes and team officials must stay at the designated area and are not allowed to take any national/territorial, cultural or religious symbols onto the podium.

15.3. Others

In case a medalist is unable to attend the ceremony for a valid reason, his/her medal and certificate may be presented to the appointed official of the team. Absence without a valid reason will result in the



forfeiture of the right to receive a medal.

16. ENTRIES

16.1. Final Entry

Final entry must be submitted through the IWUF Online Registration System.

- IWUF Online Registration System

URL: <https://registration.iwuf.org>

Contact person: HUANG Xilong

Tel: +86-19952270889

Email: Service@jyywty.com

Tech-support: Jiangyin Yunwu Shiwu Sports Technology Co., Ltd

All sections of the online entry must be completed in full, including the uploading of the following documents

- Photos of the participants (white background, head filling 70-80% of the photo, at least 480 pixels in width and 600 pixels in height).
- Passports of the participants (must be valid for at least 6 months following their final day of travel).

Final entry will be open on **May 10, 2025** and closed on **September 13, 2025, 23:59**.

All payments due to the LOC must be paid in full for registration to be considered as completed.

Each team is required to print a copy of the submitted entry and present it to the LOC upon registration.

16.2. Late Entry & Changes Policy

After the final entry deadline, teams with requests for the late entries or changes must submit a written document for approval and shall pay corresponding fees before the late entry and changes deadline, otherwise request will be denied.

Late entry and changes will be open from **September 14, 2025** and closed on **September 29, 2025, 23:59**.

Any request to change the entry (including late entry) will be handled as follows:

- The late entry is subject to the approval of the IWUF and, if accepted, it will incur a late-entry fee of USD 100 per participant.



- Replacing a participant is subject to approval by the IWUF and, if accepted, it will incur a replacement fee of USD 100 per participant.
- If changes are required due to incorrect or missing registration information, those changes are subject to approval by the IWUF and, if accepted, it will incur a fee of USD 20 per change.

Late Entry	Replacement	Information Change
USD 50	USD 50	USD 20

The above fees must be paid via wire transfer to the IWUF before **September 29, 2025, 23:59**.

Beneficiary Name/Bank Account Name	International Wushu Federation
Beneficiary Address	Avenue de Rhodanie 58, 1007 Lausanne, Switzerland
Bank Name	UBS AG
Bank Address	Place St-François 16, Case postale, CH-1002 Lausanne, Switzerland
Bank Account Number	0243-166188.61X
Bank Clearing	0243
SWIFT Code	UBSWCHZH80A
IBAN	CH680024324316618861X
Company Taxpayer Identification Number	CH TVA No. CHE-436.351.545
Country	Switzerland

17. ARRIVALS & ACCREDITATION

17.1. Arrivals

The following accredited people are required to register with the LOC at the designated hotels no later than:

- Team judges: **23:59 on October 14, 2025**.
- Athletes & team officials: **23:59 on October 15, 2025**.

17.2. Accreditation

Accreditation Desks will open at **09:00 on October 14, 2025**.

Upon arrival at the hotels, team leaders are required to complete the following process to the LOC:



1	Present each team members' passports
2	Submit Final Entry Form with signature and stamp and confirm the registration information
3	Submit three (3) national flags (size: 1m×2m)
4	Submit signed Waiver of Liabilities of all participants (Annex 1)
5	Submit valid Medical Certificates (Sample) of all athletes (Annex 2)
6	Submit valid Life Accidental Injury Insurance Certificates of all athletes
7	Pay the relevant participation fees in full (if applicable)
8	Pay the relevant penalty fees in full (if applicable)
9	Submit a bank receipt of payment (either in paper or electronic documents)
10	Sign and confirm all the above items are completed

Accreditation cards will be given to the team leader upon completion of the accreditation process. All personnel must participate in the official activities with their accreditation cards during the 10th WKFC.

The competition and training schedules will be announced after accreditation has concluded.

18. TECHNICAL MEETING

The technical meeting for team managers and coaches will take place at **10:00** on **October 16, 2025**. Each team should send one to 1-3 representative(s) to attend the meeting. The place of the technical meeting will be announced in due course.

The technical meeting content will be presented as follows:

- IWUF Event Guidelines (IWUF representatives)
- Event Logistics Information (LOC representatives)
- Event Technical Details (Chair of Jury of Appeals and Chief Referee)
- Other Matters

19. DRAWING OF LOTS

The athlete start order for each event is determined by an electronic drawing of lots carried out by the computer.

20. TECHNICAL OFFICIALS

20.1. International Technical Officials (ITOs)

Each team may send at most 1 taolu team judge to officiate at the 10th WKFC subject to approval of the



IWUF.

The IWUF will select and appoint the Jury of Appeals and the independent judges at its discretion to serve at the 10th WKFC.

All judges of the 10th WKFC must hold a valid IWUF International Judge License at the time of competition.

The LOC can nominate the judges, if number of the judges were not enough, upon approval by the IWUF.

20.1.1. Registration

The information for the team judges must be submitted at the time of their team registration.

The Jury of Appeals and all independent judges appointed by the IWUF shall submit their registration information through the IWUF Online Registration System.

All team judges and independent judges of the 10th WKFC must input their valid IWUF Judge's License numbers through the IWUF Online Registration System.

20.1.2. Uniform

All ITOs shall prepare their own black jackets, white shirts, black slacks, and black leather shoes, as well as bring an IWUF ties/scarfs.

20.1.3. Judges' Refresher Course

All 10th WKFC judges are required to participate in the Judges' Refresher Course. Absence without a valid reason will be forfeiture of the right to officiate at the 10th WKFC.

20.2. National Technical Officials (NTOs)

All NTOs served at the 10th WKFC will be nominated by the LOC.

21. IWUF SEMINAR PROGRAM

During the 10th WKFC there will be seminars across a wide range of disciplines led by renowned experts. The content will feature lectures and workshops on various wushu topics, with a focus on traditional styles.

All participants including athletes, coaches, judges, officials, and spectators are welcome to attend this event.

More information will be provided in due course.



III. TEAM INFORMATION

22. ACCOMMODATION

23.1. Accommodation Reservation

All accredited people are required to lodge at the designated hotels as arranged by the LOC.

Teams unable to stay in the designated hotels due to special reasons shall pay a participation fee of **USD 200** per person. In this case, it shall be responsibility of the team for their accommodation, meals, transportation as well as consequences arising at a result of this.

The LOC will arrange accommodation and meals for all accredited people **from the evening on October 14, 2025, until the midday on October 20, 2025**. Participants who would like to arrive earlier or depart later than the required dates should provide the dates for the intended duration of stay during the final registration process, and must ensure to book accommodations accordingly, with daily rates applying for extended stays and taking the hotel check-in time of **14:00** into consideration.

Hotel check-in is after **14:00**, and accommodations should be booked accordingly (e.g. teams wishing to check in on **October 14 before 14:00** must have booked their accommodations beginning on **October 13**).

Hotel reservations are available on a first come first serve basis, we advise teams to make your reservations early.

23.2. Room Reservation Policy

Teams with odd number of delegates including athletes and team officials when having reserved double rooms, the extra single delegate will be allocated by the LOC in the double room with other team's member, if the individual chooses not to pay for the price of a single room.

The team judges when having reserved double rooms will be allocated in double room with other team judges by the LOC.

The LOC will allocate the hotels for teams based on the other they submit their final entry.

23.3. Hotel Information

23.3.1. VIP & Judge Hotel

- **Century Sunshine Hotel Emeishan (5-star)**

Address: No. 410-412, East Mingshan Road, Emeishan City, Sichuan Province, China

Tel: +86-833-6323333

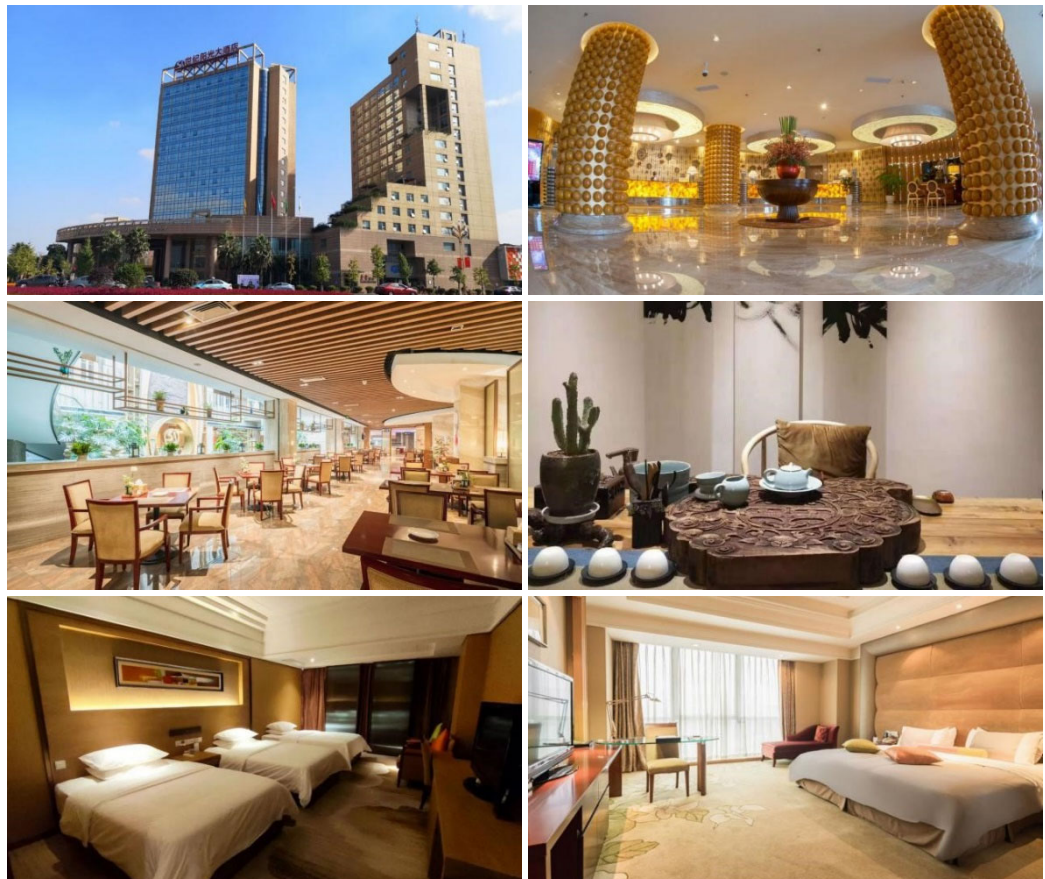
Number of Rooms: 310

Distance to the Sichuan International Tourism Expo Center is 2.3km (10 minutes by bus).

Situated in the downtown of Emeishan, the hotel offers exceptional accessibility: 5-minute drive to Emeishan High-Speed Railway Station. 10-minute drive to Emeishan Tourist Center. Surrounding attractions include East Gate Snack Street (15-minute walk) for authentic local delicacies; Wetland Park (8-minute walk) for serene natural landscapes.

As a National Five-Star Hotel, it provides diversified room categories: Five-Star standard suites and Four-Star classic rooms. Dining Excellence, Blending Sichuan culinary traditions with modern flair. Rongyuan Pavilion Banquet Hall (Capacity: 600) specialises in Sichuan and Cantonese cuisines. Langu Buffet Restaurant offers 60+ breakfast varieties. 19th-floor sky tea house with panoramic mountain views.

The hotel also has 8 multifunctional conference halls (e.g., Daguangming Hall for 600 attendees), full audiovisual support including LED walls up to 7.69m high and complimentary parking spaces provided.





Accreditation Category	Hotel	Participation Fee Per Person Per Night	
		Single Room Only one person allowed	Double Room Two persons allowed
VIPs	Century Sunshine Hotel Emeishan (5-star)	USD 102	USD 88
Judges	Century Sunshine Hotel Emeishan (4-star)	USD 85	USD 70

23.3.2. Team Hotels

- Emeishan Royal Spring Hotel (Deluxe Class Hotel)

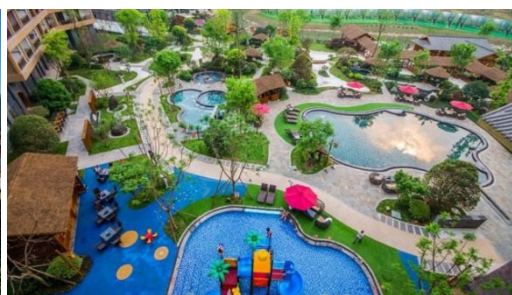
Address: No. 333, Hot Spring Avenue, Emeishan City, Sichuan Province, China

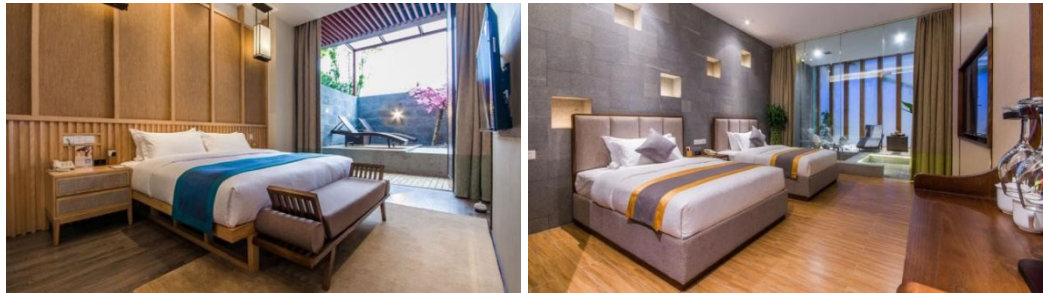
Tel: +86-833-5026666-0

Number of Rooms: 380

Distance to the Sichuan International Tourism Expo Center is 9.3km (25 minutes by bus).

Nestled at the foot of Mount Emei, a UNESCO World Heritage Site for both natural and cultural significance, the Emeishan Royal Spring Hotel stands adjacent to the iconic "Tianxia Mingshan" Archway and the 4A-rated Emeixiu Lake Park. This large-scale hot spring resort seamlessly integrates spa therapy, wellness, recreation, and leisure, with a design philosophy centered on Zen culture. Its hot spring area spans 13,950 square meters, featuring 40 uniquely themed Zen-inspired pools. Additional amenities include a fitness center, a Fantasy Children's Club, billiards and table tennis rooms, and a VIP lounge. The serene environment offers an ideal retreat to rejuvenate both body and mind.





Accreditation Category	Participation Fee Per Person Per Night	
	Single Room Only one person allowed	Double Room Two persons allowed
Athletes, Team Officials & Observers	USD 102	USD 88

- **Hong Zhu Shan Hotel (Deluxe Class Hotel)**

Address: Left Side of Baoguosi Temple, Huangwan Village, Emeishan City, Sichuan Province, China

Tel: +86-833-5525777

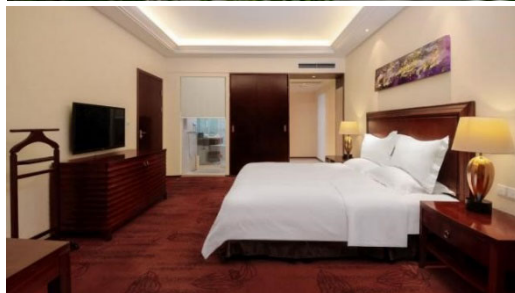
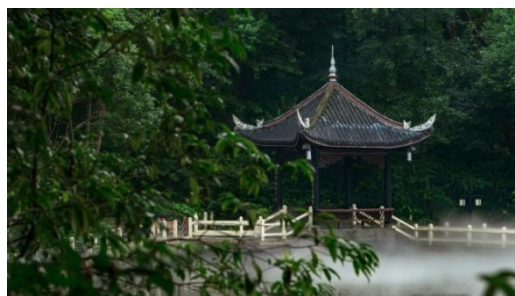
Number of Rooms: 439

Distance to the Sichuan International Tourism Expo Center is (10.4km) 28 minutes by bus.

Established in 1935, Hong Zhu Shan Hotel is Leshan City's sole five-star State Guest Hotel, nestled beside the Buddhist sanctuary of Mount Emei. Steeped in history and surrounded by spiritual ambiance, the resort spans 440,000 square meters of forested landscape, featuring a 100,000-square-meter natural lake and 5,000 meters of tranquil walking trails. With air quality boasting 3,000 times the urban average of negative oxygen ions, it is celebrated as a "garden sanctuary and forest retreat."

Amenities include a table tennis room, squash court, gym, tennis court, golf course, indoor pool, spa, sauna, and massage services.





Accreditation Category	Participation Fee Per Person Per Night	
	Single Room Only one person allowed	Double Room Two persons allowed
Athletes, Team Officials & Observers	USD 102	USD 88

- Emeishan Hot Spring Hotel (Comfort Class Hotel)

Address: No. 215, Section 2, Baoguosi Scenic Area Road, Emeishan City, Sichuan Province, China

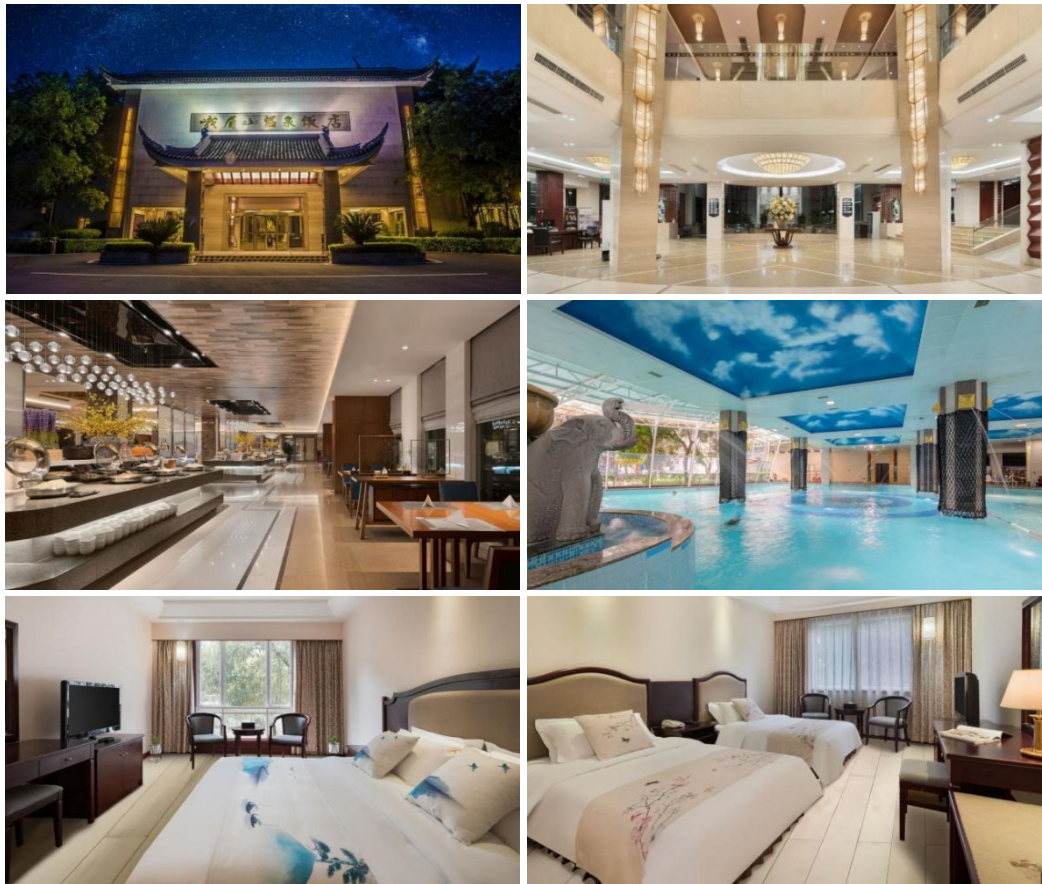
Tel: +86-833-5590370

Number of Rooms: 345

Distance to the Sichuan International Tourism Expo Center is 9.7km (28 minutes by bus).

Located in the heart of Baoguosi Temple Scenic Area's Hot Spring Valley, this luxury resort sits within Mount Emei's 5A-rated natural and cultural heritage zone. Surrounded by lush greenery (75% green coverage), the hotel boasts the renowned Lingxiu Hot Spring, capable of accommodating up to 2,000 guests simultaneously. Conveniently situated 400 meters from the Mount Emei Tourist Bus Center, 3 km from Emeishan Railway Station, and 31 km from Leshan Giant Buddha, the hotel offers 108 varieties of Chinese and Western cuisine.

Facilities include a basketball court, tennis court, café, library, and a water park.



Accreditation Category	Participation Fee Per Person Per Night	
	Single Room Only one person allowed	Double Room Two persons allowed
Athletes, Team Officials & Observers	USD 85	USD 70

23. TRANSPORTATION

23.1. Transport Services for Arrivals & Departures

23.1.1. Designated Railway Stations

Transport services between Emeishan Railway Station/Emei Railway Station and the designated official hotels will be provided by the LOC for all accredited people on their arrival and departure days.

- Pick up from Emeishan Railway Station/Emei Railway Station to the designated hotels:
October 14 and 15, 2025.



- Drop off from the designated hotels to Emeishan Railway Station/Emei Railway Station:
October 20, 2025.

23.1.2. Airports and Chengdu major Railway Stations

Reservation-based hotel shuttle services will operate from Chengdu Tianfu International Airport, Shuangliu International Airport, and Chengdu major railway stations to the designated official hotels. The express route via highway takes approximately 2.5 hours to reach the designated hotels.

Please notes that the shuttle bus services should be booked in advance with the LOC. All shuttle bus services need **additional costs** which shall be borne by their teams themselves.

If you have any inquires with the shuttle bus, please reach out to the LOC.

- Chengdu Tianfu International Airport - Designated Official Hotels

Typy of Vehicle (Including driver's seats)	One-way Fare	Transportation Fees & Restrictions
7-Seat Vehicle	USD 300	1. The fare from the designated official hotels to Tianfu Airport is charged at the same rate. 2. Commercial passenger vehicles are prohibited from entering the highway during the early morning hours (00:00-05:00) .
9-Seat Vehicle	USD 400	
17/19-Seat Bus	USD 480/USD 510	
30-Seat Large Bus	USD 490	
37/39-Seat Bus	USD 500/USD 530	
45/49-Seat Bus	USD 640/USD 690	

- Chengdu Shuangliu International Airport and Chengdu East/South Railway Stations - Designated Official Hotels

Typy of Vehicle (Including driver's seats)	One-way Fare	Transportation Fees & Restrictions
7-Seat Vehicle	USD 240	1. The fare from the designated official hotels to Shuangliu Airport and Chengdu East/South Railway Stations is charged at the same rate. 2. Commercial passenger vehicles are prohibited from entering the highway during the early morning hours (00:00-05:00) .
9-Seat Vehicle	USD 260	
17/19-Seat Bus	USD 350/USD 380	
30-Seat Large Bus	USD 400	
37/39-Seat Bus	USD 460/USD 470	
45/49-Seat Bus	USD 530/USD 570	



23.2. Local Transport Services

Local transport services between the official hotels and the competition/training venues will be provided by shuttle buses. A detailed transport schedule will be provided upon arrival.

24. FINANCIAL CONDITIONS

24.1. Teams

Any international or domestic airfare and related travel expenses, as well as the participation fees of all participants shall be borne by themselves. The participation fees include accommodation, meals, local transportation, entry (excluding the late entry and changes fees) and certificate, etc.

24.2. Technical Officials

The international airfare, accommodation and meals shall be provided for the appointed judges by the LOC. The expenses above for the team judges shall be borne by their teams themselves.

24.3. Additional Costs

Participants arriving early or departing late may be subject to additional costs related thereto which shall be borne by the participants themselves.

24.4. Payment Methods

All teams are required to complete full payment in advance to the LOC by **23:59 on September 13, 2025** through international wire transfer. Until complete payment is received, hotel rooms will not be reserved, and accreditation will not be issued.

Teams that are unable to pay through international remittance due to government policies and restrictions should communicate with the LOC in advance to make arrangements, otherwise accreditation will not be issued.

All international wire transfer and bank fees are to be paid by the teams transferring the funds themselves.

Proof of full payment should be sent to the LOC by email and brought along to the LOC by the team leader. The LOC requires that all participation fees are to be paid in advance in order to secure accommodation as required by the official hotels. The LOC will be unable to guarantee a team's required accommodation without pre-payment in full. Teams are requested to be mindful of this when submitting their final entry.

The bank Information of the LOC:



Bank Name	China Citic Bank Xiangyuehu Sub-Branch
Account Name	Sichuan Major International Travel Agency Co., Ltd
Account Number (IBAN)	8111001012301025276
SWIFT Code	CIBKCNBJ610
Beneficiary Bank Holder Address	No. 602, 6 th Floor, Unit 4, Building 1, No. 333 Jiqing 3 rd Road, Chengdu High tech Zone, China (Sichuan) Pilot Free Trade Zone, Chengdu China
Bank Address	1 st Floor, Furun International Plaza, No. 266, Tianfu 2 nd Street, Wuhou District, Chengdu City, Sichuan Province, China
Note: Any service charges incurred for international wire transfers shall be borne by participants themselves.	

25. RESPONSIBILITY OF MEMBER FEDERATIONS

The IWUF member federations (NFs) are responsible for their officials, coaches, athletes, and observers adhering to the IWUF and to all relevant rules established by the IWUF and the LOC. NFs should ensure that their participants hold themselves to the highest standards in all their actions during the event.

25.1. Fundamental Principles

All NFs' members participating in the 10th WKFC must observe and respect the IWUF constitution, rules, regulations, and representatives. Individuals deemed to have acted against the IWUF, its principles, interests or purpose may be subject to suspension or expulsion from the event and/or cancellation of their accreditation.

25.2. Attitude of Athletes & Coaches

Athletes will compete under the responsibility of their NFs. NFs are fully responsible regarding the general attitude and comportment of their athletes. Coaches should respect the judging panel and all complaints must be conducted in accordance with competition procedures. Athletes and Coaches should comply with the IWUF Code of Ethics. Any act against the IWUF judging panel may be subject to suspension or expulsion from the event and/or cancellation of their accreditation and/or competition results.

25.3. Image of Athletes

Each NF is responsible for obtaining the rights for the IWUF to use its athletes' images at the discretion of the IWUF for promotional purposes in all forms.

25.4. Insurance



Each NF is fully and sole responsible for insuring its athletes against injury and third-party risk (public liability) during the period of the 10th WKFC. The IWUF and the LOC are not responsible in part or in whole of the said liability.

26. PASSPORT & VISA REQUIREMENTS

All participants must hold a valid passport and should allow plenty of time for visa application and processing.

To ensure as few complications during visa application and travel as possible, it is suggested that all participants' passports are valid for at least 6 months following their final day of travel.

If you need any assistance on visa issues, please contact the LOC's email.

27. ANNEX

Annex 1: Wavier of Liabilities

Annex 2: Medical Certificate (Sample)

Annex 3: IWUF Brand Control Guidelines for Wushu Competition Uniforms (excerpt)



Annex 1

**10th World Kungfu Championships
Wavier of Liabilities**

Federation				Color ID Photo
Name of Participant				
Date of Birth		Gender		
Nationality		Passport No.		
Role of Participant				
*Athlete *Team Manager *Coach *Doctor *Observer				
<p>I, the undersigned, knowingly and without duress, do voluntarily submit my Entry to the 10th World Kungfu Championships (WKFC). The 10th World Kungfu Championships is hosted by the International Wushu Federation (IWUF) and organized by the Chinese Wushu Association and the City of Ermeishan, hereinafter the Chinese Wushu Association and the City of Ermeishan are referred as "Organizing Committee". I understand and acknowledge that the participation in the 10th World Kungfu Championships involves inherent risk of losses, damages or injuries, including but not limited to risks deriving from participating in the competition and trainings, in the use of the sporting facilities or equipment and/or risks arising from actions or omissions of other participants or other third parties. I further understand that my participation in the 10th World Kungfu Championships is subject to my agreement and acceptance of this Waiver of Liabilities ("Waiver"). In consideration of the IWUF and the Organizing Committee accepting my application, I hereby assume all risk of physical and mental injuries, disabilities and losses which may result from or in connection with my participation in the 10th World Kungfu Championships. Acting for myself, heirs, personal officers, agents, representatives and assignees, I do hereby release, to the extent permissible, the IWUF and the Organizing Committee including all associates, auxiliaries and affiliates, such as but not limited to their officers, agents, employees, representatives, volunteers, judges and referees and other related members from all claims, actions, suits, and controversies related to any loss, damage or injury by reason of any matter, cause or thing whatsoever that I may sustain as a result of or in connection with my participation in the 10th World Kungfu Championships. I fully understand and acknowledge that it is my sole responsibility to determine whether I am fit and healthy enough to participate in any events without posing a risk to myself or others. I hereby certify that, to the best of my knowledge, this is the case. I understand to have a duty to inspect the state of the used sporting facilities and equipment, and I waive any claim arising out of any respective defect. I fully understand that all medical attention or treatment afforded to me by the IWUF and the Organizing Committee including all associates, auxiliaries and affiliates, e.g. their officers, medical personnel, representatives, employees, volunteers, and all other related members, will be of the first aid type only, and I hereby consent to receiving such treatment and release the IWUF and the Organizing Committee as well as their officers, representatives, volunteers, employees and all other related members from any liability for such aid. I understand it is my personal obligation to obtain my own medical coverage. I am fully and solely responsible for adequately insuring myself against injury and third-party risk (public liability), with such insurance to cover the period before, during and after the event. The IWUF and the Organizing Committee including all associates are not responsible</p>				



in part or in whole for any damages or medical or hospital expenses incurred as a result of participation in the 10th World Kungfu Championships.

I agree to abide by and follow the Rules established by the IWUF and the Organizing Committee and follow all received instructions. I acknowledge and agree that it is my personal responsibility to be informed about all aforementioned Rules and instructions. I agree that I will conduct myself in a professional and courteous manner at all times and to be subject to penalties and sanctions for violations related thereto, pursuant to the IWUF Constitution and the IWUF Ethics Code as updated from time to time and other Rules established by the IWUF and the Organizing Committee. I understand that any dispute must be resolved in accordance with the IWUF Constitution and any further applicable IWUF Rules. I agree that my performance, attendance, and participation at the 10th World Kungfu Championships may be photographed, filmed or otherwise recorded or released or telecast live. I consent to allow the IWUF and the Organizing Committee use of my name, likeness, address, voices, poses, pictures, videos, live or non-live coverage and biographical and biological data concerning full or parts, in any form or language ("Identity, Voice and Image Data"), with or without other material, throughout the world, without limitation, for television, radio, video, theatrical medium picture, or any other medium and any other purpose by the IWUF or the Organizing Committee through any devices now known or hereafter devised and I do hereby waive any compensation in regard thereof as well as any future rights to the aforementioned. I also consent to the collecting, processing and use of all above-mentioned Identity, Voice and Image Data by the IWUF and the Organizing Committee for commercial and promotional services of sponsors and media partners as well as, where necessary, by third parties for the purpose of facilitating my participation an accreditation in the event (e.g. law enforcement authorities, border services agencies etc.).

Furthermore, while I note that the IWUF and the Organizing Committee will take into consideration my needs to rest, train and prepare for the events, I agree to be reasonably available during the Events for TV/digital/radio interviews, promotional or press photo sessions and press conferences at the dedicated areas.

If any provision of this Waiver is deemed to be invalid or unenforceable, the remaining provisions shall remain in full force and effect. This Waiver shall be governed by the IWUF Constitution, the further applicable Rules established by the IWUF and the Organizing Committee and, subsidiarily, by Swiss law.

I have read and fully understand the waiver listed above.

****For athletes under the age of 18 -This waiver must be signed by their parent or legal guardian****

Signature of Participant	Signature of Parent/Legal Guardian	Name of Parent/Legal Guardian
	(If participant is under 18 years of age)	
Date	Date	Date



Annex 2

**10th World Kungfu Championships
Medical Certificate (Sample)**

1. ATHLETE INFORMATION

Surname				Color ID Photo
Given Name(s)				
Country		Postal Code		
Passport No.		Telephone No.		
Email				
Address				

2. QUESTIONS FOR ATHELETE (Attach relevant documents if you answered 'yes' to any of the following)

Is a doctor currently treating you?	
Have you ever been unconscious or had a concussion?	
Have you been hit hard in the head in the last 6 months?	
Have you had any headache in the last 2 weeks?	
Do you have any problems with bleeding?	
Do any diseases run in your family?	
Have you had any surgery?	
Have you ever had to stay in a hospital?	
Do you have any medical condition?	
Do you have a history of seasonal or drug allergies?	
Is there a history of sudden death under 45 years old in the family?	

3. MEDICAL DOCTOR INFORMATION

Surname	
Given Name(s)	
Telephone No.	
Address:	



4. MEDICAL EXAMINATION

Item				Abnormalities
Head	Cranial nerves, eyes, pupil size and reactivity. Fundi. Vision by chart.	Normal	Abnormal	
	Mouth, teeth, throat	Normal	Abnormal	
	Ears	Normal	Abnormal	
	Temporomandibular joint	Normal	Abnormal	
	Brain Examination: electroencephalogram (EEG) Test (Sanda athletes only)	Normal	Abnormal	
Neck	Cervical spine, lymph nodes	Normal	Abnormal	
Chest	Breath sounds, rib, tenderness on compression	Normal	Abnormal	
Neurological System	Reflexes	Normal	Abnormal	
	Verbal responses	Normal	Abnormal	
	Motor responses and balance	Normal	Abnormal	
Cardiovascular System	Heart rate	Normal	Abnormal	
	Blood pressure	Normal	Abnormal	
	Heart examination: electrocardiogram (ECG) Test	Normal	Abnormal	
Medications Used	Name and dosage	Yes	No	

5. DOCTOR CONFIRMATION

I confirm that the Athlete is <input type="checkbox"/> fit / <input type="checkbox"/> not fit to participate in the competition.	Signature: Place/Date:
----------------------------------------------------------------------------------------------------------------------------------	-------------------------------

6. NATIONAL FEDERATION CONFIRMATION

I confirm that the above information provided is true and correct.

National Federation	
Name of Representative	
Title of Representative	
Signature:	Date:



Annex 3

International Wushu Federation (IWUF) Brand Control Guidelines for Wushu Competition Uniforms (excerpt)

PURPOSE

To ensure sponsor and manufacture rights by establishing a standard for brand placement on uniforms and other clothing items used during IWUF wushu competition.

STANDARDS & GUIDELINES

Uniforms of athletes, coaches and team officials

GENERAL REQUIREMENTS

The manufacturer logo may appear once on each piece of clothing, with an area of up to 20 cm². Note that only the quantity and size of logos appearing on uniforms will be assessed during the competition, and logos will not be reviewed for accuracy or adherence to brand standards.

The manufacturer logo may appear once on each accessory item (paired accessories are considered as two items), with an area of up to 6 cm².

A manufacturer logo may appear once on each shoe or foot item (paired shoes or foot items are considered as two items), with an area of up to 6 cm².

A national/regional Olympic Committee flag, a national/regional wushu federation flag/logo may each appear once where specified, with an area of up to 20 cm² each.

WUSHU TAOLU COMPETITION UNIFORM REQUIREMENTS

Top/Jacket

Front

No advertisements or logos may appear on the collar.

A flag may appear on the left chest area, with an area of up to 20 cm².

The manufacturer logo may appear on the right chest area, with an area of up to 20 cm².

No advertisements may appear in other areas.

Back

Sponsor or other logos may be displayed in other areas. The total number of sponsor or other logos may not exceed three (3), with a maximum area of 20 cm² each.

Pants/Trousers

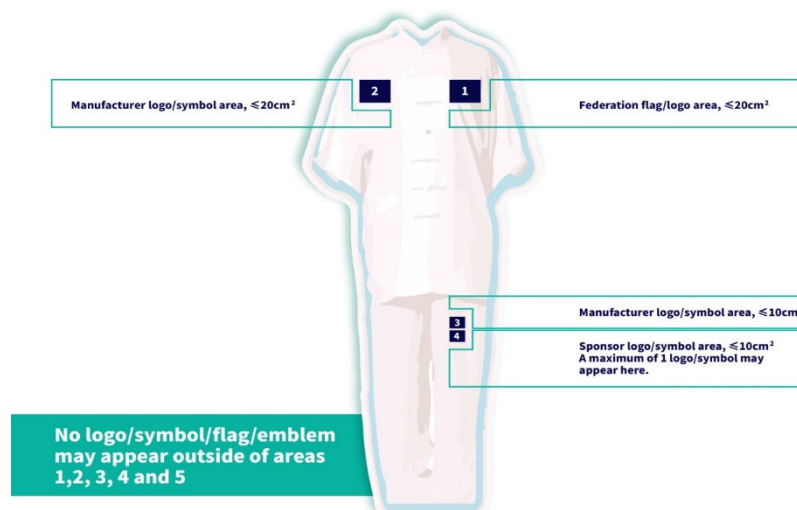
Left leg

The manufacturer logo may be arranged on the top, with an area of up to 10 cm².

Sponsor logos may appear below the manufacturer's logo but may not appear within 5 cm of the manufacturer's logo, with an area of up to 10 cm².

Right leg

No logo, flag, or other emblem may appear.



WU C S

IWUF APP



- RECOGNIZED BY / IN PARTNERSHIP WITH -

International Federation
recognised by the



International
Olympic
Committee



INTERNATIONAL SCHOOL SPORT FEDERATION



- OFFICIAL SOCIAL MEDIA PLATFORMS -



- IWUF APP -



- IWUF GLOBAL PARTNER -

恒源祥®

- IWUF GLOBAL SUPPLIER -

TaiShan

WESING 九日山